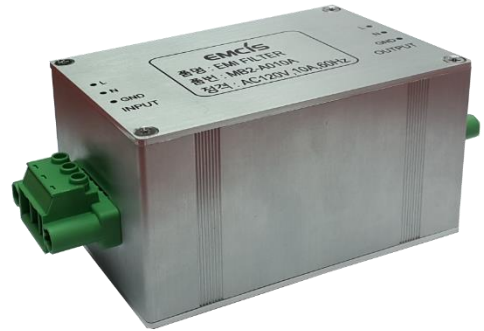


EMI FILTER



MB2-A010A

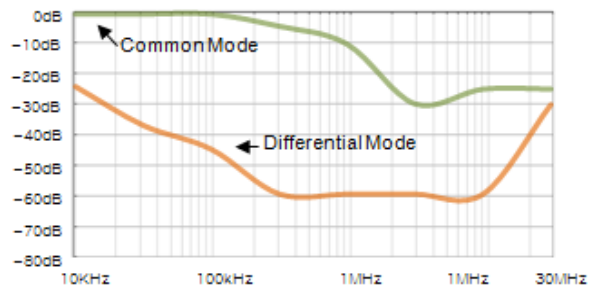
- DIN Rail Type
- Rated Current 10A
- Max Current 30A (20min) / 100A (10s)
- Flame retardant material (UL94 V1 or more)



Specification

Rated Voltage	AC 120V
Rated Current	10A
Max Current	30A (20min) / 100A (10s)
Frequency Range	10kHz~30MHz
Line	2
Insulation Resistance	100MΩ min (DC 500V 1min)
Withstand Voltage	AC 1500V (1min)
Voltage Drop	1V max. (10A)
Leakage Current	1mA max. (60Hz)
Temperature Rise	45°C max.

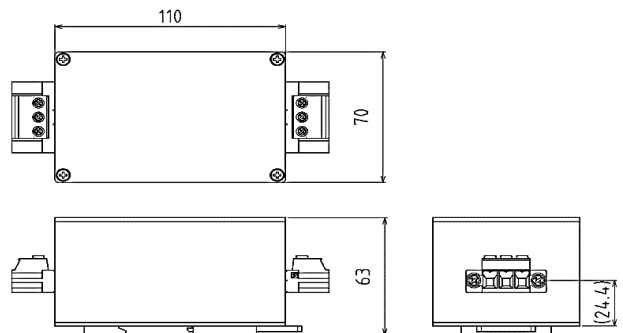
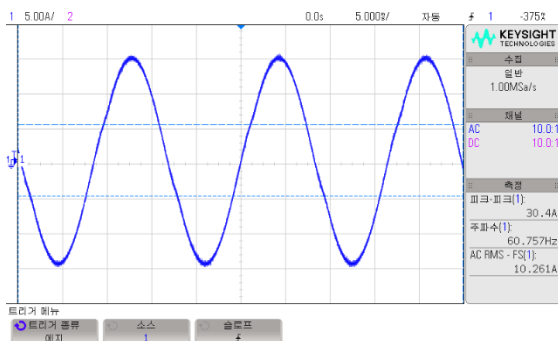
Attenuation characteristics



Shapes & Dimensions

Dimension	W110 D70 H66 (mm)
Weight	700g
Terminal Information	Phoenix Contact Model : 1777846
Installation Type	DIN Rail Type

Momentary Current



- 본 제품은 성능의 향상을 위하여 예고 없이 변경 될 수 있습니다.